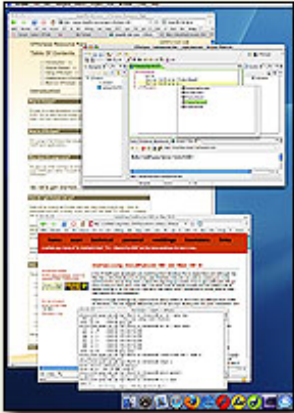


CFMX and CFEclipse ready to go on Mac

Posted At : May 21, 2005 5:27 PM | Posted By : Steven Erat

Related Categories: Java, Mac OS X, ColdFusion, Computer Technology, Macromedia



I spent the evening in the office tonight to configure a development environment for ColdFusion MX 7 on my new Mac as per [the instructions on dopefly.com](#). Setting up **Eclipse 3.0.2** and **CFEclipse 1.1.17** was a snap, and now I'm ready to go.

The only system prerequisite for Eclipse on a base OSX 10.4 system is to set the environment variable `JAVA_HOME`, which I prefer to set globally in `/etc/profile`. O'Reily has a useful article on this, [Mac OSX and Java: Where's my \\$JAVA_HOME](#).

Setting up ColdFusion on Mac is very easy, and there are two excellent sources of information on this including the [Macromedia documentation](#) and [Sean Corfield's website](#). If you prefer

Tomcat over JRun, then in addition to the Macromedia doc you might want to check out the Apple Developer Connection article on [Java and Tomcat on Mac OS X](#).

The base OS X 10.4 install come with Apache 1.3.33 already installed, which is suitable for ColdFusion, and `wscfg` worked well in this environment. Along the way I discovered [a useful Apache for Mac OS X resource](#), which I'll have to come back to soon, but to get started no research was necessary. A good resource for [Apache2 on Tiger](#) is on Simeon Bateman's blog.

Finally, if your running the firewall on OS X, then you'll have to customize the firewall rules to add the some or all of the following ports:

- ColdFusion instance's Proxy Port (found in `jrun.xml` or console startup)
- ColdFusion instance's JNDI Port (visible in JMC or console startup)
- JMC Admin port 8000
- Tomcat port 8080